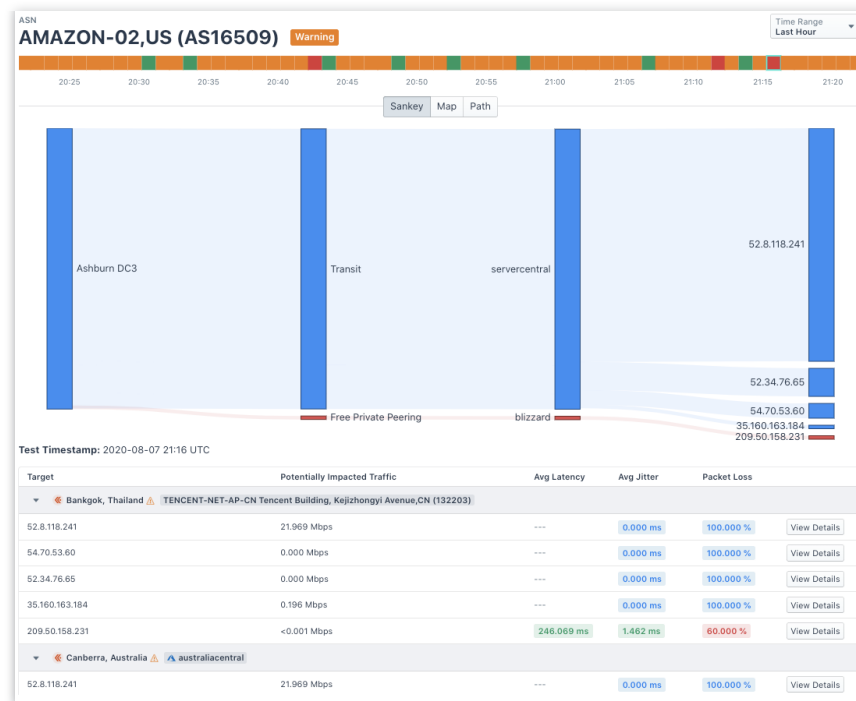


Many businesses today are blind to the digital experiences of their customers and employees until a performance issue occurs. Network teams use synthetic monitoring to proactively test for performance elements, but traditional tools cannot auto-configure or adapt to ever-changing internet traffic and paths. Without providing actual network context, these tests result in time-consuming, manual configurations, and guesswork that can negatively affect network performance, the end-users and, ultimately, the business.

With Kentik Synthetic Monitoring™, part of the Kentik Network Intelligence Platform™, network teams now have a fully integrated solution that frequently and autonomously measures performance and availability metrics with full network context, making the resulting insights actionable immediately.

Autonomous Tests

Autonomous tests allow testing towards a higher-level entity (ASN, CDN, country, region or city) without having to specify individual IP addresses. They automatically determine IP addresses to test towards based on flow data and keep the list up to date by refreshing it, periodically.



Sankey view of an ASN autonomous testing

Monitor Essential Infrastructure, Applications, and Services

SaaS solutions

Applications hosted in the public cloud

Internal applications

Transit and peer networks

Content delivery networks

Streaming video, social, gaming, and other content providers

Site-to-site performance across traditional WAN and SD-WANs

Service provider connectivity and customer SLAs

Key Capabilities

Autonomous testing

Instant site-mesh test setup

Network and application layer testing

Correlation of synthetic performance metrics with real traffic

200+ global agents covering all major cloud providers and regions

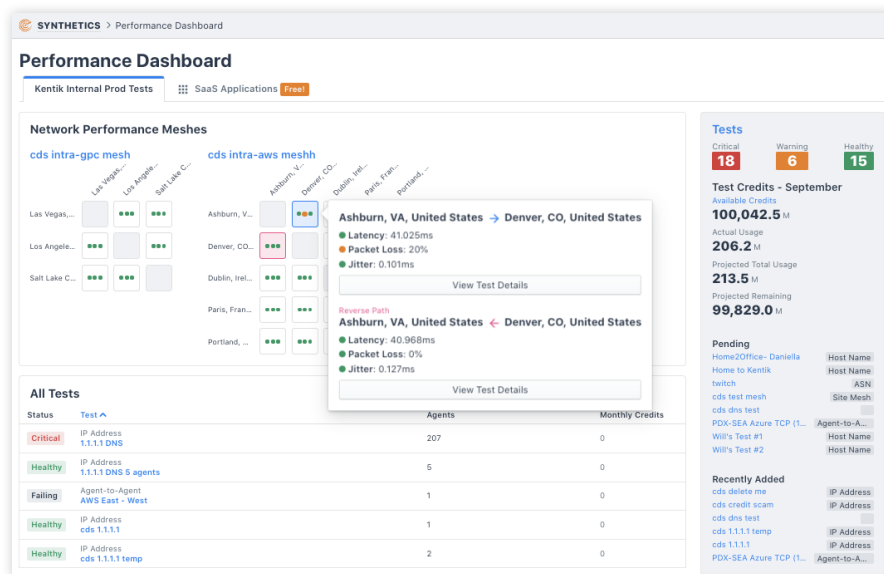
Private agents for x86 and ARM

Configurable test frequency down to sub-minute

Intelligent alerting and diagnostics

Site-Mesh Tests

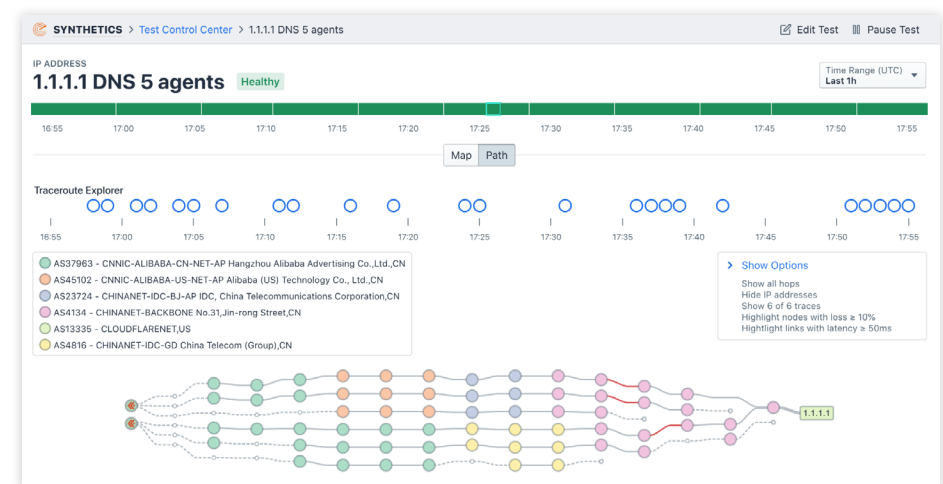
Kentik Synthetic Monitoring curates test results for quick and easy assessment. Complex, multi-site site-mesh tests can be set up with just a couple of clicks and the matrix style view helps identifying problems at a glance and quickly drilling down to the root of the issue.



Performance Dashboard view featuring site-mesh tests and Tests panel with health and credits metering overview

The Path View

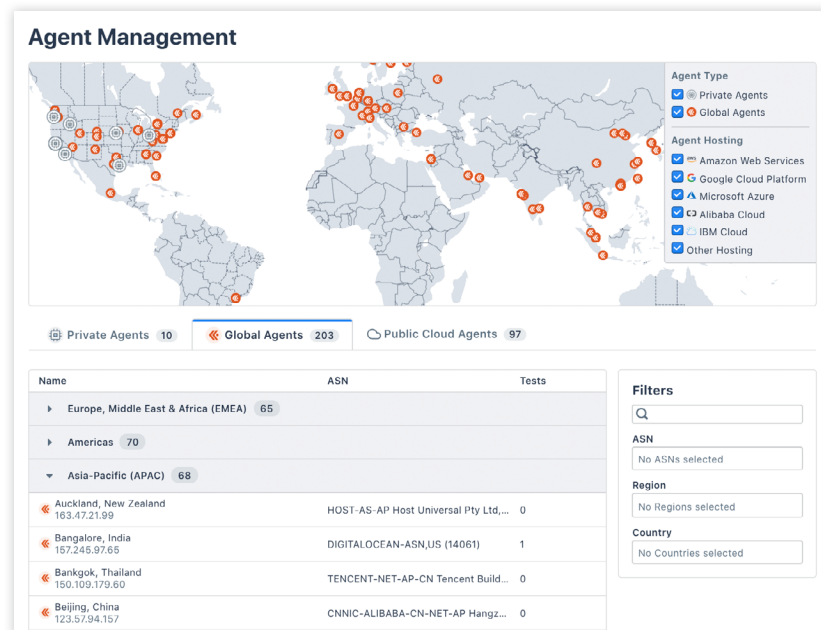
The Path view allows you to get to the root of a network issue quickly. It shows the multiple paths taken by your traffic and identifies ASNs traversed along the way, highlighting nodes and links with high latency and loss as well as changes to AS paths over time.



Path view of test results showing the various paths taken from origin to destination

Agents

Kentik Global Synthetic Network includes 200+ strategically positioned global agents in internet cities around the world and in every cloud region within AWS, Google Cloud, Microsoft Azure, and IBM Cloud. Kentik Synthetic Monitoring also provides private agents via common deployment packages for both x86 or ARM that customers can deploy quickly and easily in their own environments.



Agent Management view

Pricing

Kentik Synthetic Monitoring enables network teams to test everything that matters — frequently and autonomously — with simple pricing that offers more testing at a lower cost. The management console automatically calculates the number of credits needed per test and notifies users if additional credits are needed. Kentik Pro Edition customers receive 2,500,000 credits per month. Kentik Premier Edition customers receive 5,000,000 credits per month. Additional credits are available through the purchase of a SyntheticPak.

ABOUT KENTIK | Kentik® is the network intelligence platform for the connected world, trusted by leading digital enterprises and service providers. With Kentik, businesses eliminate the visibility and intelligence gaps associated with running dynamic and complex networks, and achieve greater network performance, reliability and security. The Kentik Network Intelligence Platform ingests diverse data streams from the internet, edge, cloud, data center and hybrid infrastructures and provides real-time visualizations and AIOps-powered insights and automation. Learn more at www.kentik.com.

Revised 20201002