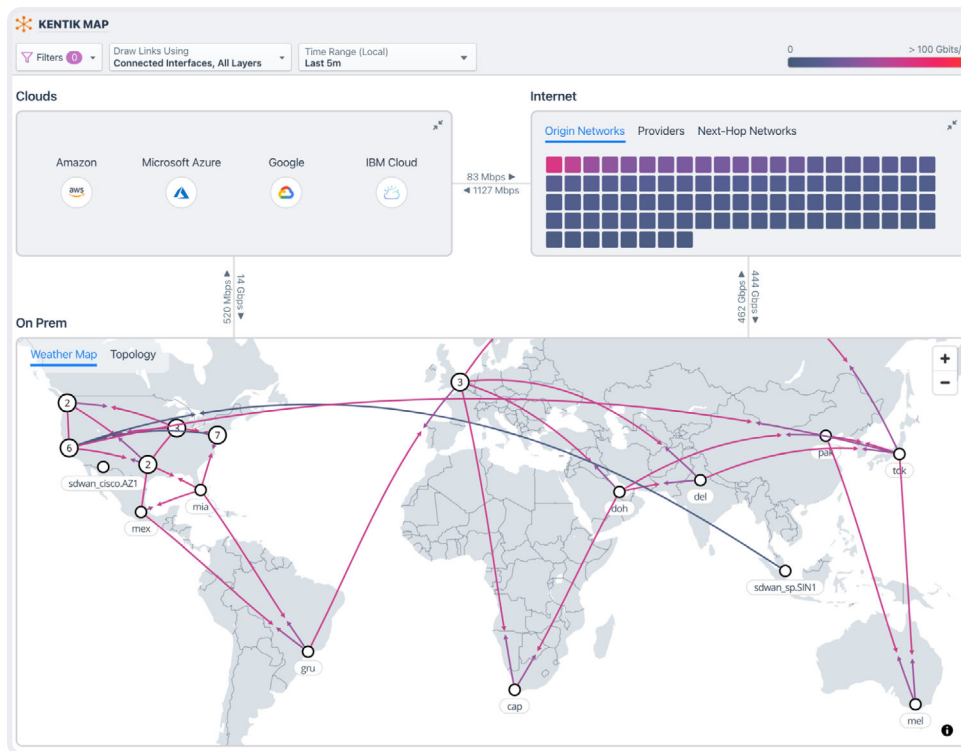


Visualize your cloud environment

As organizations adopt hybrid, multi-cloud environments, network and infrastructure teams will face serious blind spots with siloed tools impacting their ability to identify and troubleshoot problems. Kentik is the industry's first solution to close the gaps introduced by hybrid cloud environments.



The Kentik platform showing network locations, their health, and the connectivity status between them.

Kentik provides — in one pane — visualization across infrastructures, including those that you own and those you don't. You can drill into your cloud and data center environments, troubleshoot VPC flows, subnets, east-west traffic, and check your device interfaces. At the internet and WAN edge, Kentik enables monitoring, capacity planning, performance optimization, and even auditing flows through VPNs and firewall security zones.

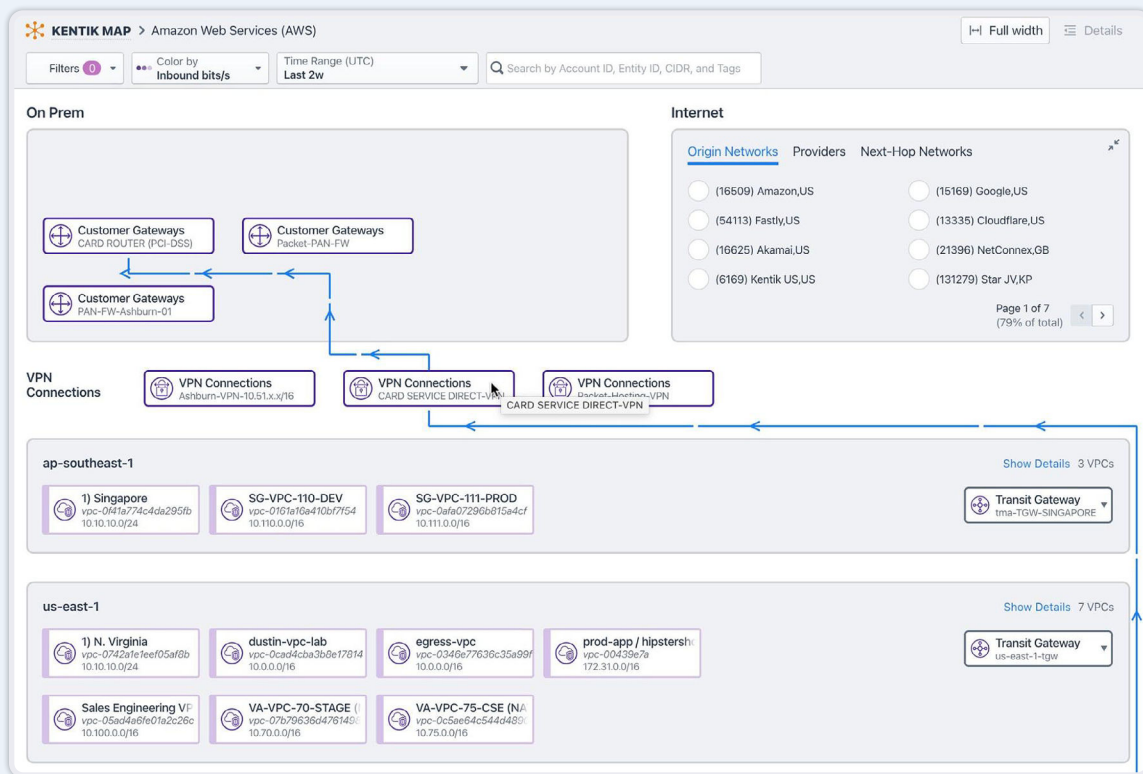
KEY BENEFITS

- ✓ Unified mapping of all network infrastructure, private, hybrid, and public cloud
- ✓ Health status presented dynamically on a visual map
- ✓ Advanced inter and intra-traffic profiling and filtering in single-click actions
- ✓ Powerful anomaly detection to help with diagnosis
- ✓ Multi-cloud and hybrid cloud visibility, including among Kubernetes clusters
- ✓ Discover traffic patterns and map networks including Kubernetes Control and optimize cloud networking costs by monitoring egress traffic
- ✓ MTTR reduction by troubleshooting faster in complex cloud environments

Beyond unified visibility, Kentik also provides intelligent alerting and diagnosis across complex infrastructures, improving uptime and reducing MTTR.

Get an instant understanding of:

- AWS, Azure, Google Cloud, and IBM VPC flow logs and inter-service dependencies
- Site topology and architecture (spine/leaf and tiers), device metrics (CPU, memory, interface utilization), VPCs, and north-south and east-west traffic
- Cloud connectivity between any source and destination — reduce MTTR by streamlining cloud troubleshooting
- Network components, such as VPNs, firewalls, and transit gateway traffic flows
- Cloud service bottlenecks that can break applications

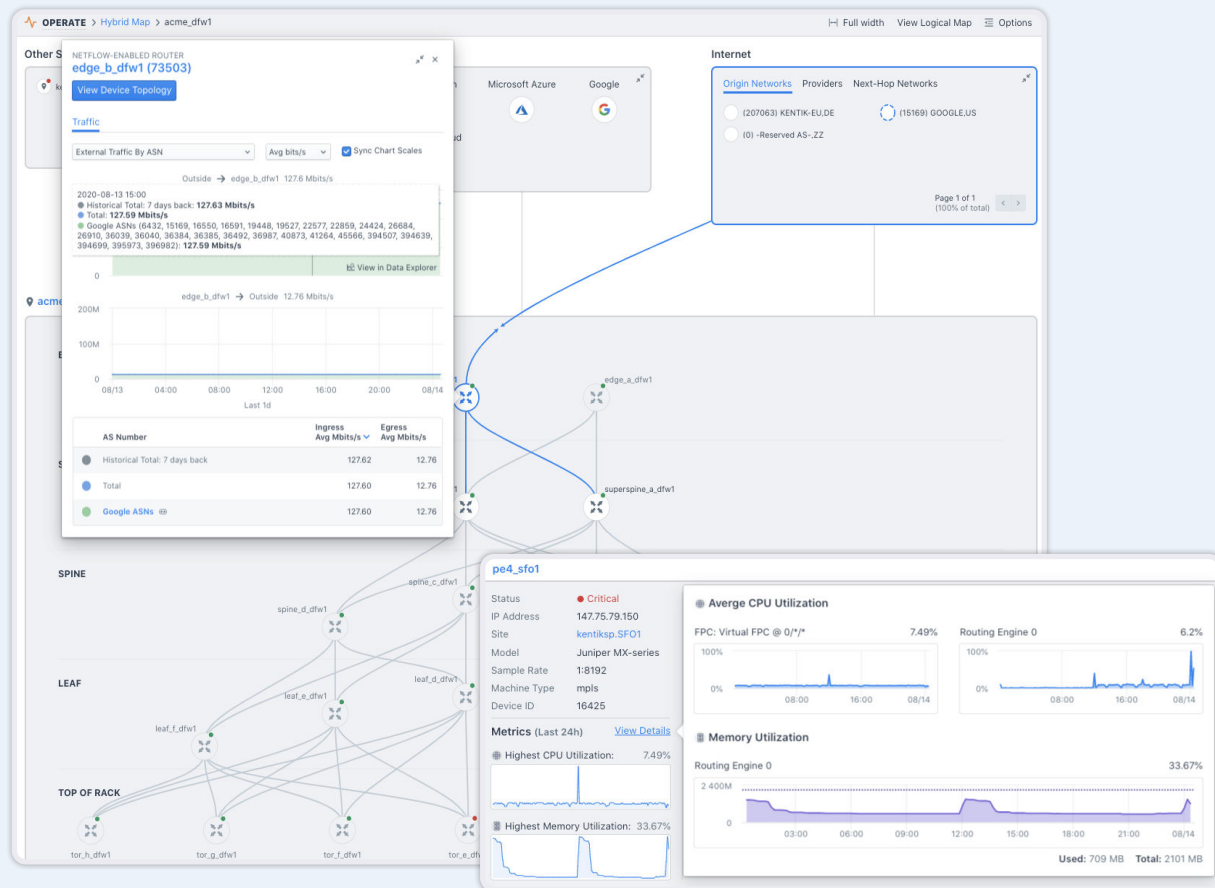


Unified visualization of hybrid infrastructure: multi-cloud, cloud regions, internet networks

These insights bring to light the specifics of traffic flows so you can pinpoint issues and route traffic more efficiently. It will also help you avoid high-cost links (like public internet) and identify which applications are transiting these high-cost links. A change in path can save significant cloud costs.

Act on what matters

Kentik ingests data streams from the internet, edge, cloud, and data centers and provides real-time visualizations and AIOps-powered early insights, diagnosis, and workflow automation for a quick resolution.

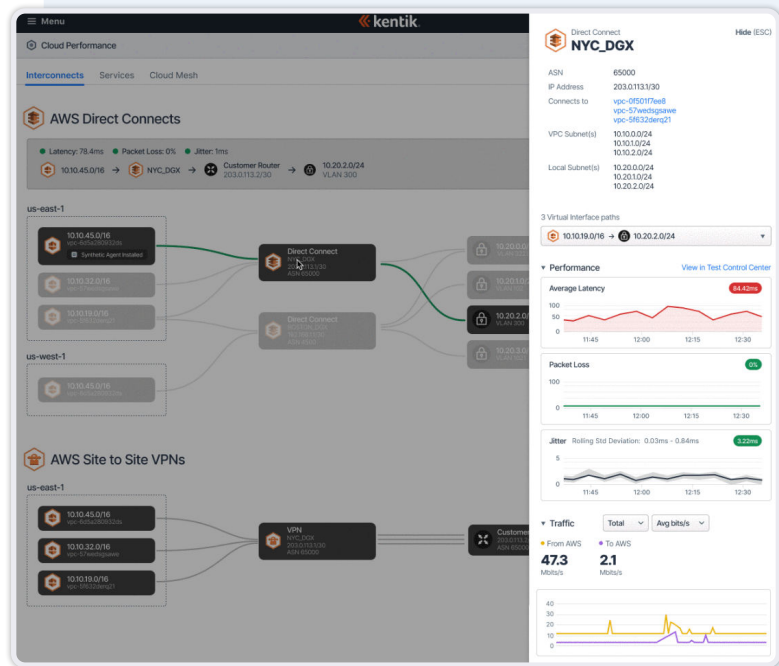


Drill into site topology, device metrics (CPU, memory, interface utilization), and north-south and east-west traffic

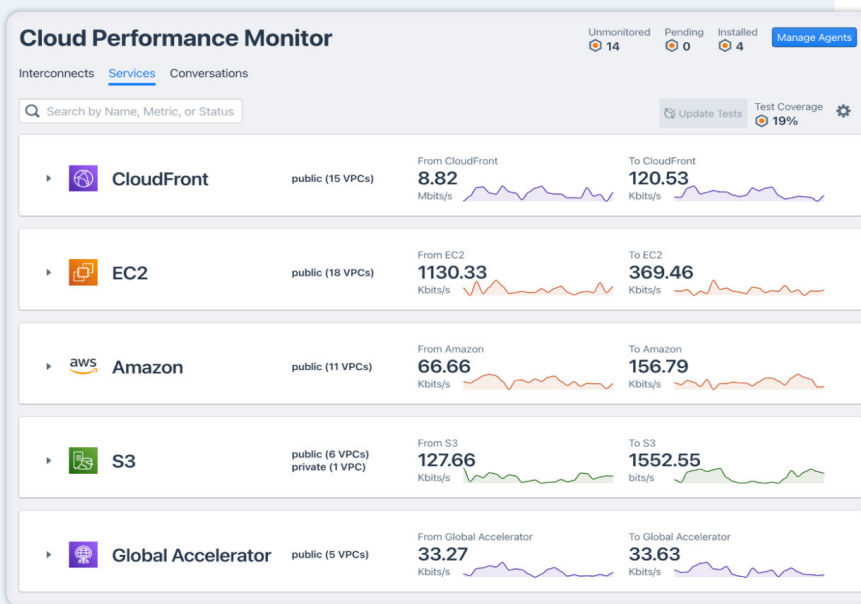
The Kentik Network Observability Cloud eliminates visibility and intelligence gaps. The Connectivity Checker enables you to verify or troubleshoot connectivity between any source and destination. Reports can be set to persistently monitor important paths. Kentik empowers professionals with preemptive agility in complex hybrid cloud environments — where disruptions are intrinsically harder to foresee and recover from — so they can deliver reliable networks and a great digital experience.

Detailed cloud performance

Kentik provides both a network and services view of cloud performance. Proactively and continuously test network connectivity and performance. Visualize the network within and between VPCs, regions, gateways, and on-prem. Use knowledge about how your traffic is routed through clouds to proactively detect high latency in critical routes between regions, zones, and on-premises endpoints. Get a bidirectional view from both source and destination addresses. Get a performance view from different geographies for all internet-facing applications using Kentik's global agents.



AWS Direct Connect traffic flows and performance metrics

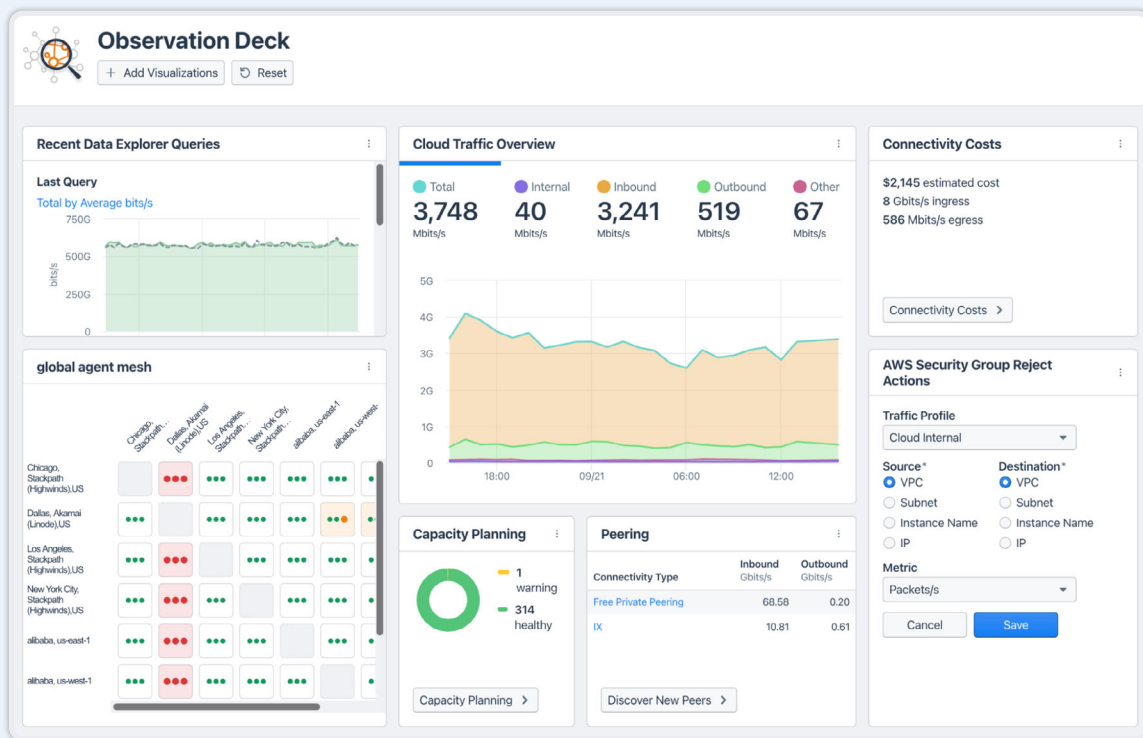


Cloud Performance Monitor and the view of service performance

See the performance of critical cloud services and determine which regions or VPCs are driving utilization. Dig into the data to see history, status codes, and DNS lookup time.

Optimize cloud traffic costs

Manage cloud connectivity and data transfer costs. Identify and optimize misconfigured expensive egress routes. Monitor cloud networking expenses by detecting shifts in consumption rates or new traffic sources incurring high costs. Observe cost in real-time and historical trends. Project and control cost at instance, service, and account level for accountability and planning.



Your customizable dashboard showing critical cloud monitoring data.

“The visualization tools of Kentik make everything so clear and easy to understand.”

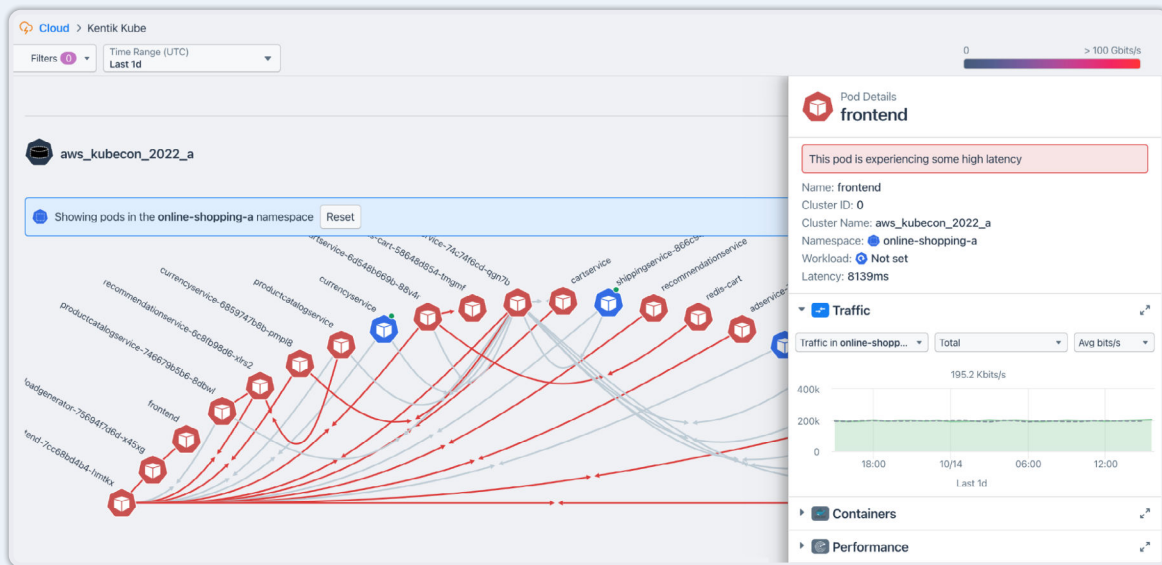
— Tatsuya Mori

Senior Manager of IT Infrastructure/Network

SQUARE ENIX

Monitor Kubernetes clusters

Kentik Kube is a new module of the Kentik Network Observability Cloud that helps cloud and infrastructure engineers gain detailed network traffic and performance visibility both inside and among their Kubernetes clusters so they can quickly detect and solve network problems. We built Kentik Kube to provide visibility for cloud-managed Kubernetes clusters (AKS, EKS, and GKS) and on-prem.



Kubernetes cluster running on AWS, displaying latency at the front end of an online shopping site.

Understand traffic flows between and within pods. Analyze traffic and identify performance problems between pods and services to help application teams troubleshoot problems quickly. Track traffic flows between clusters and external systems or clients. Find anomalous traffic and understand dependencies.

ABOUT KENTIK | Kentik is the network observability company. Our platform is a must-have for the network front line, whether digital business, corporate IT or service provider. Network professionals turn to the Kentik Network Observability Cloud to plan, run and fix any network, relying on our infinite granularity, AI-driven insights and ridiculously fast search. Market leaders like IBM, Box, and Zoom rely on Kentik for network observability. Visit us at kentik.com and follow us at [@kentikinc](https://twitter.com/kentikinc).

Revised 20221019